

# CONTRACT FURNITURE COMPANY

*Professional Grade Furniture*



# Architectural Seating

## Outdoor Seating



Our Scandinavian and Italian chairs and tables create a clean and sophisticated look for your restaurant, lounge, club and seating area(s). Cutting edge design, coupled with refined European build, makes for a stylish & solid investment.

Your Chairs and Tables come with a 1 year structural warranty - limited to the original end use.



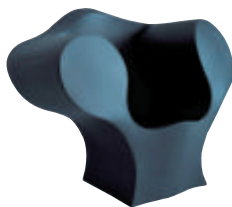
**Supernatural Chair**  
#SU050  
20<sup>3</sup>/<sub>4</sub>"w. x 20" d. x 32"h.  
Stackable



**Supernatural Chair**  
#SU156  
20<sup>3</sup>/<sub>4</sub>"w. x 20" d. x 32"h.  
Stackable



Supernatural Chairs are one-piece molded fiberglass reinforced with carbon-fiber. Enjoy this strikingly handsome chair in both indoor & outdoor settings. Backrest is available in either solid & designed (perforated circles). Chairs stack four-high. Colors: White, Yellow, Orange, Sky Blue, Grey Mahogany & Solid Black.



**The Big Easy Armchairs**  
#TZ001 In Red, White or Black  
#TZ161 High Gloss Lacquer in Black or White  
52<sup>1</sup>/<sub>4</sub>"w. x 34<sup>3</sup>/<sub>4</sub>"d. x 35<sup>3</sup>/<sub>4</sub>"h.  
Molded Polyethylene



**Nest Armchair\***  
#NN042  
Polyethylene  
Available in White, Black or Fuchsia  
26" w. x 27<sup>1</sup>/<sub>4</sub>"d. x 30<sup>1</sup>/<sub>4</sub>"h.



**Victoria and Albert High Table**  
#VA03W  
Rotational Molded Polyethylene  
Translucent White  
35" w. x 35" d. x 27<sup>1</sup>/<sub>4</sub>"h.

## Indoor/Outdoor Seating



**Ripple Chair**  
#RC050  
Fiberglass White Shell with  
Black Stainless Base  
26<sup>3</sup>/<sub>4</sub>"w. x 23<sup>1</sup>/<sub>4</sub>"d. x 31<sup>1</sup>/<sub>2</sub>"h.



**Little Albert Armchair**  
#VA042 in Chalk White or Translucent  
#VA161 in Red or Black High Gloss Lacquer  
29<sup>1</sup>/<sub>4</sub>"w. x 24<sup>1</sup>/<sub>2</sub>"d. x 27<sup>1</sup>/<sub>2</sub>"h.



**Osorom Bench**  
#OS017  
47<sup>1</sup>/<sub>4</sub>"w. x 47<sup>1</sup>/<sub>4</sub>"d. x 13<sup>3</sup>/<sub>4</sub>"h.  
Seat Molded in White  
Hirek Technopolymer

All dimensions are approximate. \*Not a quick ship item.



**Fjord Lounge**

Leather

**#FJ001-T** Black w/Green Stitching,  
Sled Base

**#FJOV6-T** Black Front, White Back, Black  
Base and White Stitching, Swivel Base  
34<sup>1</sup>/<sub>4</sub>"w. x 24" d. x 25<sup>1</sup>/<sub>4</sub>"h.



**Fjord Dining Armchair**

**#FH105**

22<sup>3</sup>/<sub>4</sub>"w. x 21<sup>3</sup>/<sub>4</sub>"d. x 28<sup>3</sup>/<sub>4</sub>"h.  
White Shell and Base



**Fjord Relax Armchair**

**#FJ03K-T**

37<sup>1</sup>/<sub>2</sub>"w. x 31<sup>1</sup>/<sub>2</sub>"d. x 40<sup>1</sup>/<sub>4</sub>"h.  
Red Tony Leather, Aluminum  
Grey Base and Beige Stitching



**Victoria and Albert Armchair**

**#VA061-W**

29<sup>1</sup>/<sub>4</sub>"w. x 25<sup>1</sup>/<sub>2</sub>"d. x 30<sup>1</sup>/<sub>4</sub>"h.  
Upholstered in Divina 623 (Red)  
or 542 (Orange)



**Bloomy Armchairs**

**#BM061-W** Small, Grey/Black  
24<sup>3</sup>/<sub>4</sub>"w. x 24<sup>3</sup>/<sub>4</sub>"d. x 28<sup>1</sup>/<sub>4</sub>"h.

**#BM001-Q** White/Black  
33<sup>3</sup>/<sub>4</sub>"w. x 33<sup>3</sup>/<sub>4</sub>"d. x 28"h.  
Upholstered with Removable Covers



**Take a Line For a Walk**

**#TK0V6-T** Revolving Armchair  
31<sup>1</sup>/<sub>2</sub>"w. x 34<sup>1</sup>/<sub>4</sub>"d. x 43<sup>1</sup>/<sub>4</sub>"h.

**#TK0V7-T** Revolving Footstool  
25<sup>1</sup>/<sub>2</sub>"w. x 24<sup>1</sup>/<sub>4</sub>"d. x 13<sup>3</sup>/<sub>4</sub>"h.  
Both in Black Tony Leather  
with Rifle Brown Base



**Fjord Stone Foot Stool**

Black Leather Top

**#FJ017-W** Black Upholstered  
Sides 31<sup>1</sup>/<sub>2</sub>"w. x 23<sup>1</sup>/<sub>2</sub>"d. x 13<sup>3</sup>/<sub>4</sub>"h.

**#FJ077-W** Violet Upholstered  
Sides and White Stitching



**Oval Table**

**#TB016**

Black Printed Tempered Glass Top and  
Steel Base in High Gloss Black Finish  
86<sup>1</sup>/<sub>2</sub>"w. x 49<sup>1</sup>/<sub>2</sub>"d. x 30"h.



**Yo-Yo Table**

**#Y00HU**

Lacquered Table  
13<sup>3</sup>/<sub>4</sub>"w. x 17"d. x 17<sup>3</sup>/<sub>4</sub>"h.  
Black or Red



**Phoenix Low Table**

**#PH0HZ/OHV** Round White Laminate or Black/White  
Zebra Stripe Veneer Top 40<sup>1</sup>/<sub>2</sub>"w. x 39<sup>1</sup>/<sub>4</sub>"d. x 10<sup>3</sup>/<sub>4</sub>"h.

**#PH0HP/OHK** Oval Black Laminate or Red/Black  
Stripe Veneer Top 55"w. x 40<sup>1</sup>/<sub>2</sub>"d. x 13"h.  
Black Base



**Bloomy Side Table**

**#BM06H** White or Black Laminate Top  
**#BMOHV** Red/Black Stripe Veneer Top with  
Black Base or Black/White Zebra Stripe  
Veneer Top with White Base  
17"w. x 17<sup>3</sup>/<sub>4</sub>"d. x 21<sup>3</sup>/<sub>4</sub>"h.



**Pause**

Freestanding Bookcase For Use  
Horizontally or Vertically  
**#PA160** 77<sup>1</sup>/<sub>4</sub>"w. x 11<sup>3</sup>/<sub>4</sub>"d. x 46<sup>1</sup>/<sub>2</sub>"h.  
**#PT160** 78<sup>3</sup>/<sub>4</sub>"w. x 19<sup>3</sup>/<sub>4</sub>"d. x 31"h.  
In Anodized Aluminum

All dimensions are approximate.

**CONTRACT FURNITURE COMPANY**



**NORTH AMERICAN  
SALES OFFICE AND SHOWROOM**

2325 PALOS VERDES DRIVE WEST  
SUITE 307

PALOS VERDES ESTATES, CA 90274

TEL: 800.507.1785

FAX: 800.507.1789

EMAIL: SALES@CONTRACTFURNITURE.COM



**NEW ENGLAND AND MID ATLANTIC  
SALES OFFICE AND SHOWROOM**

936 WEST END AVENUE  
SUITE A2

NEW YORK, NY 10025

TEL: 888.870.0145

FAX: 888.870.0146

EMAIL: GENE@CONTRACTFURNITURE.COM



**CORPORATE ADDRESS**

1874 SOUTH PACIFIC COAST HIGHWAY #377  
REDONDO BEACH, CALIFORNIA 90277



**WWW.CONTRACTFURNITURE.COM**