

# TABLES/BASES - OUTDOOR



Our Solo tabletops are made by creating a resin wood-substrate and fusing melamine sheets to the top surface and underside. The hardwood is first chipped into rice sized pieces which are then dried and infused with resins. The process renders each particle water resistant. Large presses compress these resin wood particles into tabletops under heat and pressure.

The resulting tabletop is seamless as well as weather and water resistant - it can't delaminate and resists warping.

Your tabletops come with a 3 year structural warranty\*. Your bases, a 1 year warranty - limited to the original end use.

\*Under long term use and UV light there could be a slight color change.

## Solo Collection

### Tabletops

- #ROUND 24" dia
- #ROUND 28" dia
- #ROUND 32" dia
- #ROUND 36" dia
- #ROUND 42" dia
- #ROUND 48" dia
- #ROUND 54" dia
- #ROUND 60" dia
  
- #SQUARE 24" x 24"
- #SQUARE 28" x 28"
- #SQUARE 32" x 32"
- #SQUARE 36" x 36"
- #SQUARE 42" x 42"
- #SQUARE 48" x 48"
  
- #RECTANGLE 24" x 32"
- #RECTANGLE 24" x 40"
- #RECTANGLE 28" x 44"
- #RECTANGLE 32" x 48"
  
- #OBLONG 37" x 57"
- #OBLIC 38" x 65"



White



Mahogany



Saigon



Cherry



Barn Siding



Coriander Fiber



Chips



Beige Marble



Onyx Marble



Genoa Marble



Smoke Granite



Travertine



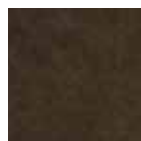
Byzance Sienne



Byzance Bleu



Granite d'Aoste



Cressida



Graphite Talc



Rocky Road



Natural Alabaster

## In Stock Patterns

All color samples shown are reproduced as accurately as possible and are for reference purposes only. Please contact your regional sales office for actual color samples.

Solo, Non-Stock Patterns - Allow 8 to 12 Weeks



Dark Mahogany



Walnut



Teak



Light Oak



Arizona



Autumn



Light Stone



Maple



Stone



Silver



Black Granite



Green Stone



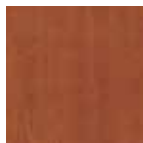
Dakota



Beech



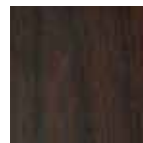
Knotty Pine



Calvados



Colorado



Wenge



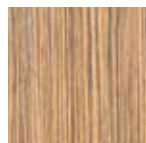
Driftwood



Blanc



Montana



Light Zebrano



Tennessee



Virginia



Marron Wall



White Wall



Grey Wall



Paris Chataigne



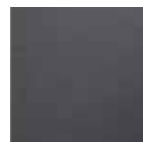
Paris Marron



Grey Palissade



White Palissade



Anthracite



Concrete



Tenere



White Graffiti



Bali Natural



Bali Cappuccino



Bali Espresso



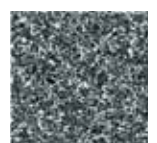
Seringa



Black Graffiti



Bysance Green



Grey Granite

All color samples shown are reproduced as accurately as possible and are for reference purposes only. Please contact your regional sales office for actual color samples.

# TABLES/BASES

## Quarizz® & Urban Textures Tabletops

### Quarizz® Collection

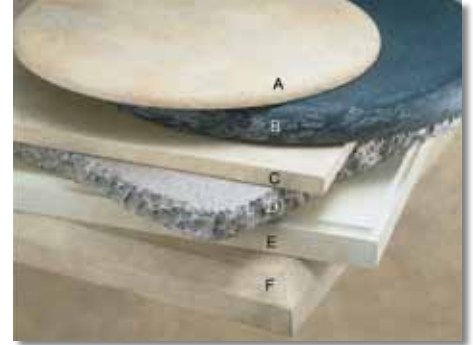
Our versatile and elegant Quarizz® Stone Tabletops are manufactured from a hard surface stone product that meets the highest standards. Engineered and tested to withstand the wear and tear of the most demanding of environments including high volume restaurants, major theme parks, hotels and casinos. This surface offers unlimited shapes, textures and colors to coordinate with and complement your design. Usable indoors or outdoors, you can be assured that this durable tabletop will serve you well.

- Light weight
- Resists bacterial growth
- Odorless
- Easily repaired and maintained
- Water and stain resistant
- Heat resistant up to 180°
- No toxic chemicals/formaldehyde free
- Natural appearance
- Flexible and shock absorbent
- Ultraviolet resistant
- Impact and chip resistant

#### Stone Tabletops

- A. #HALF BULLNOSE
- B. #FULL BULLNOSE
- C. #FLAT EDGE
- D. #BROKEN EDGE
- E. #OGEE
- F. #BEVELED

Round: 24", 30", 36", 42", 48", 60"  
 Square: 24", 30", 36"  
 Rectangular: 24" x 30", 24" x 42", 30" x 42",  
 30" x 48", 30" x 60", 36" x 48",  
 36" x 60"



#### Omega Colors



Buckskin

Coffee

Sand

#### Premium Colors



Tuscan

Centenaire

Forum



Jumal

Rancho Santa Fe

Vincenza

Yuma

### Urban Textures Tabletops

- Ideal for a variety of different styles from modern to eclectic
- Fiber reinforced concrete tabletops made for outdoor or indoor use
- Recycled fibers used to add strength and durability
- Engineered to meet the highest standards for commercial use
- 1 1/2" thick tops with 3/4" marine grade plywood sub top
- All tops are hand crafted and are naturally unique in color and character
- Available with four different edges: bullnose, eased, ogee or chamfer
- Made to order, 3 to 4 week lead time for manufacturing
- Custom sizes, shapes and colors available based on order
- 1 year standard warranty

#### Classic Color



Natural



Verde Copper

#### Classic

Classic	Artisan	Shape
#UTC24R	#UTA24R	24" Round
#UTC30R	#UTA30R	30" Round
#UTC36R	#UTA36R	36" Round
#UTC42R	#UTA42R	42" Round
#UTC2424	#UTA2424	24" Square
#UTC3030	#UTA3030	30" Square
#UTC3636	#UTA3636	36" Square
#UTC4242	#UTA4242	42" Square
#UTC2430	#UTA2430	24" x 30" Rectangular
#UTC2442	#UTA2442	24" x 42" Rectangular
#UTC2448	#UTA2448	24" x 48" Rectangular
#UTC3042	#UTA3042	30" x 42" Rectangular
#UTC3048	#UTA3048	30" x 48" Rectangular

#### Artisan



Chamfer

Eased



Ogee

Bullnose

#### Artisan Colors



Black Walnut



Brown Stone



Mahogany



Steel



Thyme



Tuscany

### Edge Treatments

3/8" rebar in all edge treatments.



Eased

Ogee

Bullnose

Chamfer

3/8 Rebar\*

\*Available on all treatments

All color samples shown are reproduced as accurately as possible and are for reference purposes only. Please contact your regional sales office for actual color samples.

Faux Travertine Faux Stone



Round: 20", 26", 30", 32", 36",  
42", 48", 52", 60"  
Square: 26", 30", 36", 42", 48"  
Rectangular: 24" x 30", 24" x  
36", 30" x 44"  
Eased Edge



Round: 18", 20", 24", 30", 36",  
42", 48", 54"  
Square: 24", 32", 36", 42"  
Rectangular: 24" x 36", 30" x 44"  
Oval: 42" x 72", 42" x 84"  
Edge=Textured/Eased

Faux Travertine Colors



Vanilla Mocha Latte Java

Faux Stone Colors



Mocha Latte Gold Aged Bronze

Faux Leather Colors



White Pewter Ivory Forest Green



Desert Sand Cream Cafe



Faux Leather

Round: 18", 20", 24", 30", 36", 42", 48", 54"  
Square: 24", 30", 32", 36", 42"  
Rectangular: 24" x 30", 24" x 32", 24" x 42",  
32" x 70", 42" x 70"  
Smooth Edge

Cultured Granite

**Smooth Edge**  
Round: 24", 30", 36", 42", 48"  
Square: 30", 32", 36"  
Rectangular: 30" x 42", 30" x 48"

**Chiseled Edge**  
Round: 18", 20", 24", 30", 36", 42", 48", 54"  
Square: 24", 30", 32", 36"



Chiseled Edge  
Cultured Granite Colors Only

Cultured Granite Colors



Terra Cotta Tan Sand Cocoa

All color samples shown are reproduced as accurately as possible and are for reference purposes only. Please contact your regional sales office for actual color samples.

Tabletops have a smooth or texture surface, free of defects and porosity and consist of 15-20 mils of a UV stabilized, marine grade, ISO gel-coat, colored as specified by the customer. Tabletop construction consist of a 3/4" OSB wood\* core contained within and totally encased in a tough 1/8" thick fiberglass shell. The shell meets at the edge of the core and turns down to form a 1/4" skirt around the outside circumference of the table, this skirt is trimmed to a 2" width (1 1/2" on some smaller tables). Custom reinforcements and construction are available per customer request and will be priced accordingly.

\* 3/4" OSB wood is standard and recommended as a core material to best avoid any possibility of de-lamination and warp, however, a 3/4" exterior glued plywood core is available upon request.

# TABLES/BASES

Cultured Marble, Teak & S/S Tabletops

## Cultured Marble Collection



Tapioca



Swiss  
Chocolate



Racing Green



Mont Blanc



Merlot



Mahogany



Jade



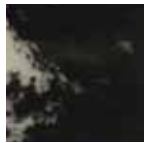
Forest Green



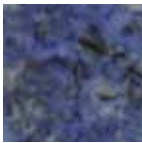
Europa



Botticino



Black



Bahia Blue



Austral Brick



Antique  
White



Almond Beige



Cultured Marble Tops make an ideal restaurant table, as they are extremely durable and easy to clean. Damage such as cigarette burns or scratches can be easily buffed. Tops can be made in a myriad of colors and not just limited to our standard colors. Both the 1 1/4" and 2" tabletops are made out of cultured marble with a plywood substrate underneath. The tops are made using a blend of crushed marble rock, polymers and resin which is then poured into molds that have a gel coat previously sprayed. The resulting top is completely sealed (nonporous) and is four times stronger than quarry marble.

### 1 1/4" Thick Tops

Round: 20", 24", 30", 36", 42", 48", 60"

Rectangular: 24" x 24", 30" x 24", 30" x 30", 36" x 24", 36" x 30", 36" x 36", 42" x 24", 42" x 26", 42" x 30", 42" x 36", 42" x 42", 48" x 30", 48" x 36, 60" x 30", 60" x 36"

### 2" Thick Tops

Round: 24", 30", 36"

Rectangular: 24" x 24", 30" x 30", 36" x 36, 42" x 24"

## Teak Collection

#TK-TP24"ROUND 24" Round  
#TK-TP30"ROUND 30" Round  
#TK-TP36"ROUND 36" Round

#TK-TP24"X24" 24" Square  
#TK-TP32"X32" 32" Square  
#TK-TP36"X36" 36" Square

#TK-TP24"X32" 24" x 32" Rectangular  
#TK-TP32"X48" 32" x 48" Rectangular



## Stainless Steel Collection

#TR-24" 24" Round  
#TR-30" 30" Round  
#TR-32" 32" Round  
#TR-36" 36" Round

#TS-24"X24" 24" Square  
#TS-30"X30" 30" Square  
#TS-32"X32" 32" Square  
#TS-36"X36" 36" Square

#TS-32"X48" 32" x 48" Rectangular



All color samples shown are reproduced as accurately as possible and are for reference purposes only. Please contact your regional sales office for actual color samples.

Futura Stainless Steel



**Table Base**  
#BOLT DOWN



#FUTURA  
16" dia x 27 1/2"h  
20" dia x 27 1/2"h

All Futura Available in Dining HT & Bar HT



#FUTURA  
18" sq x 27 1/2"h  
20" sq x 27 1/2"h



#FUTURA  
16"w x 32"d x 27 1/2"h

Classic II Series/Aluminum Available in Silver, Charcoal or Bamboo



**Classic II**  
#AL-1316  
Fits 32" to 49" Tabletop



**Classic II**  
#AL-1316-03  
Fits 24" to 32" Tabletop



**Classic II**  
#AL-1316DP  
Fits 30" to 49" Tabletop



**Classic II**  
#AL-1316BH  
Fits 32" to 48" Tabletop  
Available in Bar HT

Classic Aluminum Series



**Classic**  
#AL-1804  
26" sq  
Available in Dining HT and Bar HT



**Classic Round**  
#AL-2100  
18" dia  
Available in Dining HT and Bar HT



**Classic 2400**  
#AL-2400  
24" dia  
Available in Dining HT and Bar HT



**Classic Wood**  
#AL-1700  
17" dia

Endura



**Endura Cross Base**  
#T BASE 5" X 22"  
#CROSS 22" X 22"  
#CROSS 30" X 30"  
#CROSS 36" X 36"  
Bar Height Extension

All Endura Available in Dining HT & Bar HT



**Endura Disc Base**  
17" dia, 22" dia, 30" dia

Endura bases are standard restaurant table bases with a zinc undercoat to inhibit rust.



**Self Stabilizing Stainless Steel**  
#RS-10  
24"w x 28"h

# TABLES/BASES

## Table Bases

### Margate Collection/Aluminum Available in Black or Dark Bamboo



#MARGATE 3  
24<sup>3</sup>/<sub>4</sub>"w x 28"h



#MARGATE 3 GRANDE  
33<sup>1</sup>/<sub>8</sub>"w x 28"h



#MARGATE 3 BAR HEIGHT  
24<sup>3</sup>/<sub>4</sub>"w x 40<sup>1</sup>/<sub>2</sub>"h

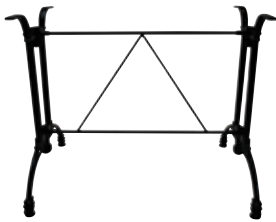


#MARGATE 4  
24<sup>5</sup>/<sub>8</sub>"w x 24<sup>3</sup>/<sub>8</sub>"d x 28"h



#MARGATE 4 GRANDE  
33<sup>1</sup>/<sub>8</sub>"w x 33<sup>1</sup>/<sub>8</sub>"d x 28"h

### Bradley Collection/Aluminum



#MARGATE 2  
25<sup>3</sup>/<sub>8</sub>"w x 33<sup>7</sup>/<sub>8</sub>"d x 28"h



#MARGATE 4 BAR HEIGHT  
24<sup>5</sup>/<sub>8</sub>"w x 24<sup>5</sup>/<sub>8</sub>"d x 40<sup>1</sup>/<sub>2</sub>"h



#BRADLEY 3  
22<sup>3</sup>/<sub>4</sub>"w x 28"h



#BRADLEY 4  
#BRADLEY 4 W/FLIP TOP  
25<sup>3</sup>/<sub>8</sub>"w x 25<sup>3</sup>/<sub>8</sub>"d x 28"h



#BRADLEY 2  
22<sup>3</sup>/<sub>8</sub>"w x 29<sup>1</sup>/<sub>2</sub>"d x 28"h

### Style FSS Collection/Stainless Steel



#SINGLE SQUARE  
18" sq x 28<sup>1</sup>/<sub>2</sub>"h  
21" sq x 28<sup>1</sup>/<sub>2</sub>"h



#SINGLE ROUND  
18" dia x 28<sup>1</sup>/<sub>2</sub>"h  
21" dia x 28<sup>1</sup>/<sub>2</sub>"h  
28<sup>1</sup>/<sub>2</sub>" dia x 28<sup>1</sup>/<sub>2</sub>"h



#DOUBLE RECTANGULAR  
27<sup>1</sup>/<sub>2</sub>"w x 18"d x 28<sup>1</sup>/<sub>2</sub>"h



#TRIPLE ROUND  
28<sup>1</sup>/<sub>2</sub>" dia x 28<sup>1</sup>/<sub>2</sub>"h

### Belmar Collection/Aluminum Available in Silver or Black Pepper



#BELMAR 3  
#BELMAR 3 TEAK  
22<sup>7</sup>/<sub>8</sub>"w x 28<sup>1</sup>/<sub>8</sub>"h



#BELMAR 4  
#BELMAR 4 TEAK  
26"w x 26"l x 28<sup>1</sup>/<sub>8</sub>"h  
Available in Dining HT  
and Bar HT



#BELMAR 5  
#BELMAR 5 TEAK  
29<sup>1</sup>/<sub>2</sub>"w x 29<sup>1</sup>/<sub>2</sub>"l x 28<sup>1</sup>/<sub>8</sub>"h  
Available in Dining HT  
and Bar HT



#BELMAR 2  
#BELMAR 2 TEAK  
24<sup>3</sup>/<sub>4</sub>"w x 28"l x 28<sup>1</sup>/<sub>8</sub>"h

## Gyro Table Base

The Gyro's unique folding and stacking capabilities save on storage space and set-up time, which increases productivity and profitability. Made from Carbylex® components, a specially formulated material that is chemical, weather and UV resistant, lightweight and has "ultra high" mechanical strength. Sturdy safety catch prevents the table top from tipping unexpectedly. A quick flip of the lever will lock/unlock the legs when folding or unfolding the table and stabilizes the table at the same time. The main support structure of the Gyro is a high strength, rust free aluminum extrusion. The legs are made from lightweight, rust free aluminum and are treated with a "chip-resistant" powder coating. Tough polymer toe caps are fitted to reduce noise when moving tables, and to prevent scuffing of the table base feet, leg tips and floor surfaces.

### Gyro Flip Top Table Bases

- 58008 3 Leg Dining HT
- 58000 4 Leg Dining HT
- 58001 4 Leg Bar HT



## Aluminum Table Bases



- Deluxe Table Bases**
- #82118B End, 15<sup>1</sup>/<sub>2</sub>"w x 15<sup>1</sup>/<sub>2</sub>"d x 17"h
  - #822400 End, 17<sup>1</sup>/<sub>2</sub>"w x 17<sup>1</sup>/<sub>2</sub>"d x 18"h
  - #824300 Coffee, 26"w x 26"d x 19<sup>5</sup>/<sub>16</sub>"h
  - #82536B Bar Height, 35"w x 35"d x 40"h
  - #82148B Dining, 35"w x 35"d x 27<sup>1</sup>/<sub>2</sub>"h
  - #82174B Large Dining, 32"w x 60"d x 27<sup>1</sup>/<sub>2</sub>"h



- Pedestal Table Base**  
#654800  
30<sup>5</sup>/<sub>16</sub>"w x 30<sup>5</sup>/<sub>16</sub>"w x 27<sup>1</sup>/<sub>2</sub>"h

## Resin Table Bases



- #1530BAS  
Dining Height  
Black



- #1590BAS  
Bar Height  
Black

## Classic Folding Table Bases Nesting



- #TBA-101  
27"w x 27"d x 28"h  
#VAIL Bar Height  
27"w x 27"d x 40"h

## Flip Table Bases



- #FLIP-DH/FLIP-BH  
27"w x 27"d x 28"h  
#DIP Bar Height  
27"w x 27"d x 40"h

## Polished Stainless Steel Complete Tables



- #TR24 24" dia
- #TR30 30" dia
- #TR32 32" dia
- #TR36 36" dia



- #TS24 24" sq
- #TS30 30" sq
- #TS32 32" sq
- #TS36 36" sq
- #TSC 32" x 48"

Available in  
Dining HT & Bar HT

